

East Bay 
Regional Park District
www.ebparks.org

Garin/Dry Creek Pioneer Regional Parks
Ukraina Loop trail, Hayward
Photo: Hillary Van Austen



2013 Budget Brief

Headquartered in Oakland, California
Operating a Regional Park System within Alameda and Contra Costa Counties

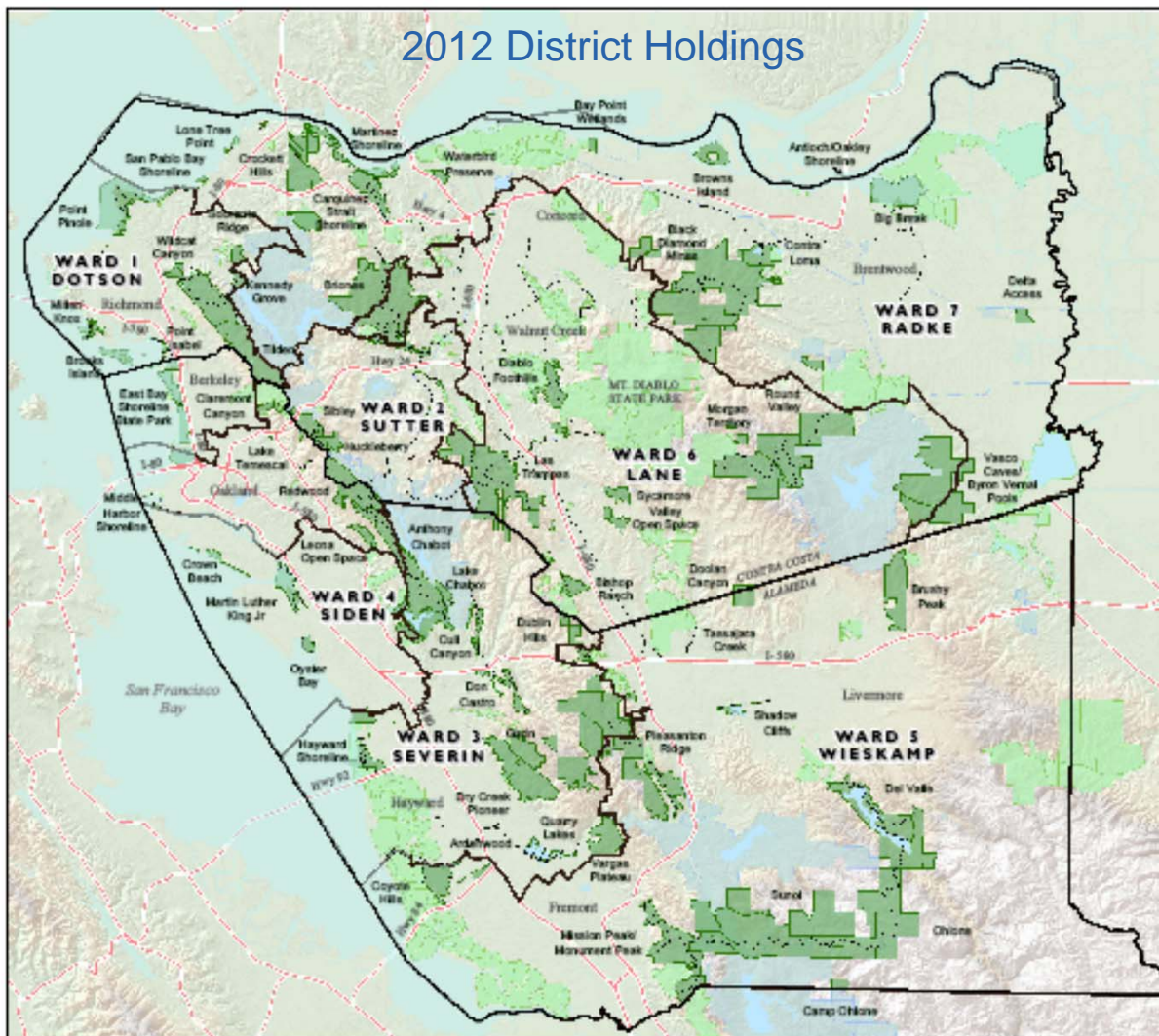
About the East Bay



EAST BAY REGIONAL PARK DISTRICT

Environmental Programs
& GIS Applications
©BayAreaFoodProject/MapInfo
E:\GIS\workspace\2012\2012_ebrpd.mxd

2012 District Holdings



Legend

- EBRPD Lands
- Other Open Space
- Watershed Lands
- Ward Boundaries
- Freeways
- EBRPD Regional Trails

0 5 10 Miles

10 Sq Miles



Regional Park District

In the midst of a terrible financial depression, the citizens of Alameda and Contra Costa Counties realized the need to formally set aside parkland, preserving the region's natural beauty for present and future generations to enjoy. Their efforts led to the 1934 creation of the East Bay Regional Park District. Today, the East Bay Regional Park District operates 65 parks, more than 1,100 miles of trails, and covers 113,478 acres. Public open space, recreation and preservation of the region's natural and cultural resources are key elements in the quality of life for the inhabitants in Alameda and Contra Costa Counties. The philosophy established in the 1930's, to set aside and preserve parkland, continues to guide the District today and into the future.

The following vision statement articulates the guidelines, values and objectives of the District: ***“The East Bay Regional Park District will preserve a priceless heritage of natural and cultural resources, open space, parks and trails for the future, and will set aside park areas for the enjoyment and healthful recreation for generations to come. An environmental ethic guides us in all that we do.”***

The District's pursues the highest standards of public service in resource conservation, management, interpretation, public access, and recreation. The District's Master Plan provides a guide to the stewardship and development of the parks, including a careful balance between the need to protect and conserve resources, and the recreational use of parklands. The health of our community is linked to the health of our parks and open spaces; East Bay Regional Park District works to protect both.

2013 Strategic Considerations

- Expanding youth and cultural diversity outreach
- Continuing successful, conservative fiscal approach
- Scheduling facility project, utilizing 2012 Promissory Note proceeds and new Major Infrastructure Renovation and Replacement Fund resources
- Meeting public needs through Measure WW and CC project planning and new facility openings

Board of Directors

The East Bay Regional Park District is governed by a seven-member board of directors, who are publicly elected to serve four-year terms. Each Board Member represents a specific geographic area within the two county jurisdiction of the District. For more information about the Park District Board of Directors or the current schedule of public meetings, contact the Clerk of the Board at 1-888-EBPARKS (1-888-327-2757), extension 2020, or email APulido@ebparks.org.

Whitney Dotson
Ward 1 Board Member
Treasurer of the Board
Richmond
E-mail: wdotson@ebparks.org

John Sutter
Ward 2 Board Member
President of the Board
Oakland
E-mail: jsutter@ebparks.org

Carol Severin
Ward 3 Board Member
Castro Valley
E-mail: cseverin@ebparks.org

Doug Siden
Ward 4 Board Member
Alameda
E-mail: dsiden@ebparks.org

Ayn Wieskamp
Ward 5 Board Member
Vice President of the Board
Livermore
E-mail: awieskamp@ebparks.org

Beverly Lane
Ward 6 Board Member
Danville
E-mail: blane@ebparks.org

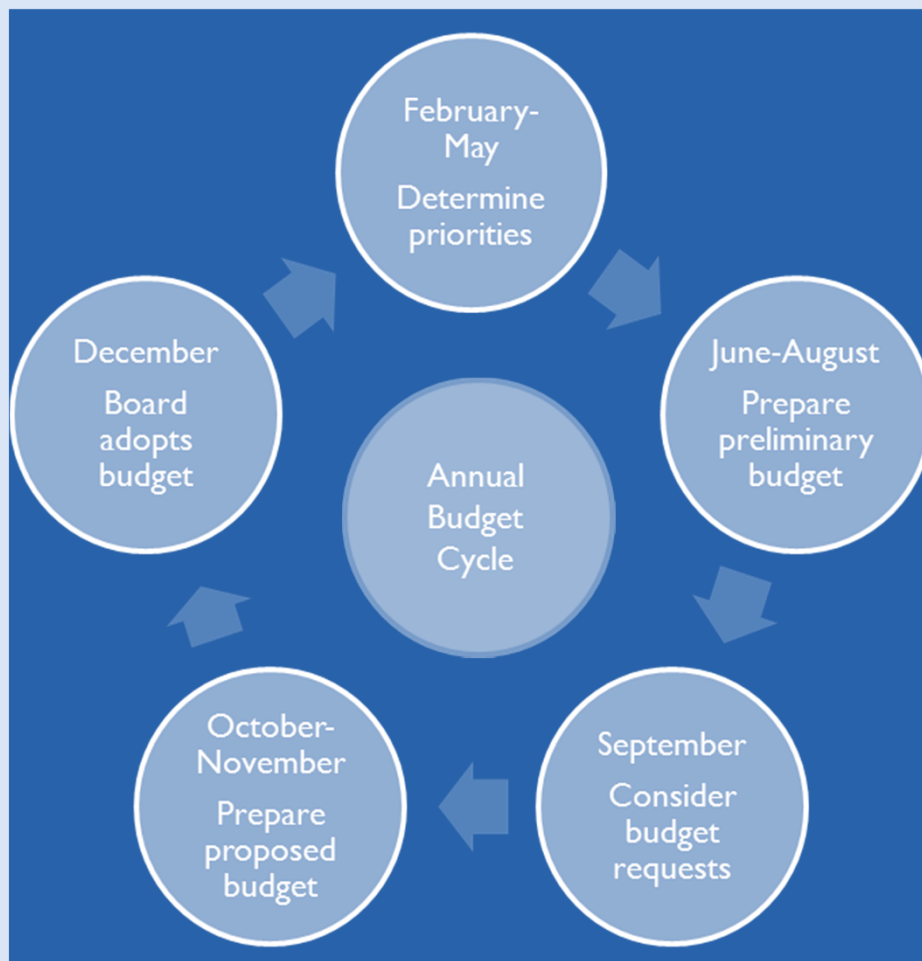
Ted Radke
Ward 7 Board Member
Secretary of the Board
Martinez
E-mail: tradke@ebparks.org

Budget Process

The District's budget is a vital tool for establishing public policy, maintaining control over the management of resources, and implementing fiscal plans. Almost every decision, activity and program is expressed within the context of the budget. Budget planning begins with Board workshops held February through May, which address District priorities, capital finance, capital improvements, land acquisition and trail projects.

Throughout the year, the public is invited to comment on the District's long and short term plans, including the budget, via public board meetings held on the first and third Tuesday of each month. A schedule of all public hearings is posted on the District website and at District headquarters. In addition, the public can contact District staff to provide input and feedback.

This 2013 Budget Brief provides a synopsis of the 2013 District Operating and Project Budget. The complete budget documents may be viewed or downloaded at: <http://www.ebparks.org/about/budget>.



2013 General

To the Board of Directors:

I am pleased to submit the 2013 operating and project budgets for the East Bay Regional Park District. The annual budget process is a critical link to addressing the policies and vision of the Board of Directors and fulfilling the District's Master Plan. This 2013 budget presents a financial plan to guide our agency during the upcoming year. As a result of the Board's continuing commitment to sound fiscal management, our organization remains stable and strongly committed to fulfilling our vision and mission despite the fiscal



challenges of the past few years. After three consecutive years of budget reductions, in 2013 we are presenting a budget without cuts, and which includes critically important staffing and infrastructure increases, protection of key resources, and fulfillment of ongoing obligations for park improvements.

2013 Budget Highlights

The District's 2013 operating and project budget of \$206 million is balanced, when taking into account planned use of fund balances in the debt service and project fund budgets. The 2013 budget includes funding for 727.7 full time equivalent (FTE) staff positions, which is a net increase of 6.4 FTEs over the prior year.

The General Fund budget totals \$108 million (including transfers out), with 2013 being the first year since 2010 that the General Fund has not budgeted the use of fund balance as a resource. 2013 General Fund revenues are budgeted to exceed appropriations by \$220,780.

Summary of Financial Trend Information

Trends (in millions)	2009 Actual		2010 Actual	2011 Actual	2012 Budget	2013 Budget	
District Resources*	\$ 259	**	\$ 167	\$ 163	\$ 130	\$ 134	
District Uses*	\$ 166		\$ 194	\$ 195	\$ 171	\$ 166	^
General Fund Appropriations/Expenditures	\$ 102		\$ 97	\$ 102	\$ 106	\$ 108	
Project Appropriations/Expenditures #	\$ 30		\$ 47	\$ 43	\$ 15	\$ 17	
FTE (Permanent and Temporary)	744		706	706	721	728	
* excludes transfer in/out and intra-District charges and related revenue							
** includes debt issuance proceeds							
^ includes use of bond proceeds received in prior years							
# excludes transfers in/out							

Manager's Message

2013 Major Initiatives and Challenges

- Providing thoughtful leadership and balanced allocation of resources to concurrently allow for: the continuation of existing public services; the recovery of services reduced since 2008; the replacement of aging infrastructure; and modest new growth in public parks, facilities and programs-
- Honoring and continuing to implement the projects funded in the voter-approved Measures WW and CC, providing future parks and facilities to meet the needs of the District's growing population-
- Successfully concluding 2013 AFSCME contract negotiations
- Addressing continuing staff retirements, transitions, new staff selection and training
- Accommodating new state and federal statutes and mandates related to employee pensions, fiscal policies, environmental regulation, climate change and others matters as they arise.

The District's long-term, entity-wide, strategic goals are included in the District's Master Plan update, which will be completed the beginning of 2013. The following issues are priorities being addressed in the update:

- Providing a variety of "trails for all"
- Leading the movement for Healthy Parks Healthy People
- Affirming the role and identity of the Regional Parks
- Balancing funding priorities, meeting expectations and sound fiscal practices
- Support the shift to "green" communities
- Developing productive partnerships
- Responding to changes in demographics
- Creating conservation and management standards for cultural and historic resources..

The 2013 Budget Brief summarizes information which is available in detail in the District's 2013 Adopted Operation and Projects Budgets, which are available on our website at www.ebparks.org.

Respectfully Submitted,



Robert E. Doyle
General Manager

2013 Budget

	GENERAL FUND	SPECIAL REVENUE FUNDS	DEBT SERVICE FUNDS
RESOURCES			
Revenues:			
Taxes & Assessments	\$ 96,460,000	\$ 7,848,600	\$ 16,030,000
Charges for Services	8,182,900	50,000	-
Property Usage	1,896,600	549,800	-
Investment Earnings	900,000	94,000	9,400
Inter-agency Agreements	244,400	-	-
Miscellaneous	513,000	27,000	-
Total Revenues	108,196,900	8,569,400	16,039,400
Other Resources:			
Transfers In	459,400	17,267,780	1,435,520
TOTAL RESOURCES	\$ 108,656,300	\$ 25,837,180	\$ 17,474,920
USES			
Expenditures:			
Personnel Costs	\$ 75,814,240	\$ 4,357,980	\$ -
Supplies	7,351,100	221,880	-
Services	13,404,750	485,070	16,000
Capital Outlay	374,000	-	-
Inter-agency Agreements	200,000	17,100,000	-
Debt Service	-	-	19,903,590
Intra-District Charges	4,753,890	115,000	-
Total Expenditures	101,897,980	22,279,930	19,919,590
Other Uses:			
Transfers Out	6,537,540	3,693,530	-
TOTAL USES	108,435,520	25,973,460	19,919,590
Change in Fund Balance /Net Assets	220,780	(136,280)	(2,444,670)
TOTAL	\$ 108,656,300	\$ 25,837,180	\$ 17,474,920

General Fund-operating resources and activities not required to be accounted for in another type of fund
Special revenue funds-resources which are legally restricted for specific uses
Debt service funds-resources accumulated to pay debt payments and related interest and principal payments
Internal service funds-charges for, and costs of services and goods provided by one part of the District to other District departments
Permanent funds-segregation of permanent endowments
Project funds-capital and other project expenditures and related funding, including unspent bond proceeds

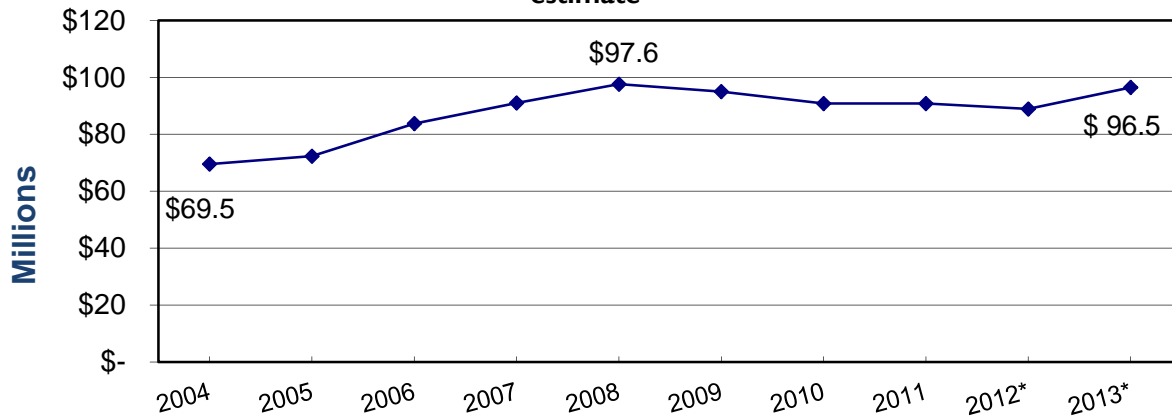
at a Glance

INTERNAL SERVICE FUNDS	PERMANENT FUNDS	PROJECTS FUNDS	2013 TOTAL ALL FUNDS
\$ -	\$ -	\$ -	\$ 120,338,600
10,457,340	-	-	18,690,240
-	-	-	2,446,400
255,100	37,400	320,000	1,615,900
-	-	221,000	465,400
110,000	-	-	650,000
10,822,440	37,400	541,000	144,206,540
2,000,000	-	13,723,150	34,885,850
\$ 12,822,440	\$ 37,400	\$ 14,264,150	\$ 179,092,390
\$ 3,870,210	\$ -	\$ 6,302,560	\$ 90,344,990
2,000	-	146,000	7,720,980
6,211,000	-	3,148,210	23,265,030
138,000	-	7,394,700	7,906,700
-	-	-	17,300,000
-	-	-	19,903,590
-	-	-	4,868,890
10,221,210	-	16,991,470	171,310,180
1,132,000	19,000	23,503,780	34,885,850
11,353,210	19,000	40,495,250	206,196,030
1,469,230	18,400	(26,231,100)	(27,103,640)
\$ 12,822,440	\$ 37,400	\$ 14,264,150	\$ 179,092,390

Ten-Year Revenue Trends

Property Tax Revenues - General Fund

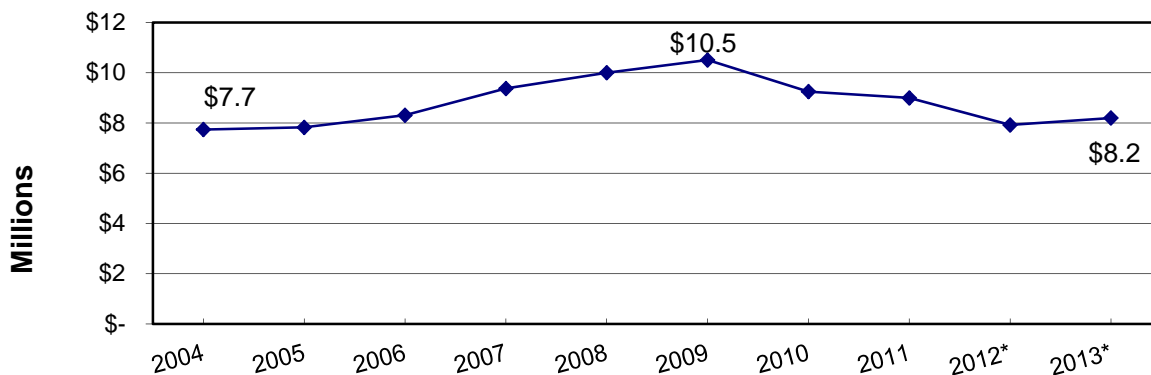
*estimate



Property tax is the General Fund's largest (89%) unrestricted revenue source. 2013 property tax revenue budget of \$96,460,000 includes secured, unsecured, supplemental, redevelopment agency pass-through, payments associated with the demise of redevelopment, penalties and other taxes, less county collection fees. The amount is based on the assessed value (AV) of real and tangible property located within the Alameda and Contra Costa Counties. A slight increase (1.7%) is projected for 2012/2013 AV. Full recovery of AV is not expected to occur until 2015/2016.

Charges for Services - General Fund

*estimate

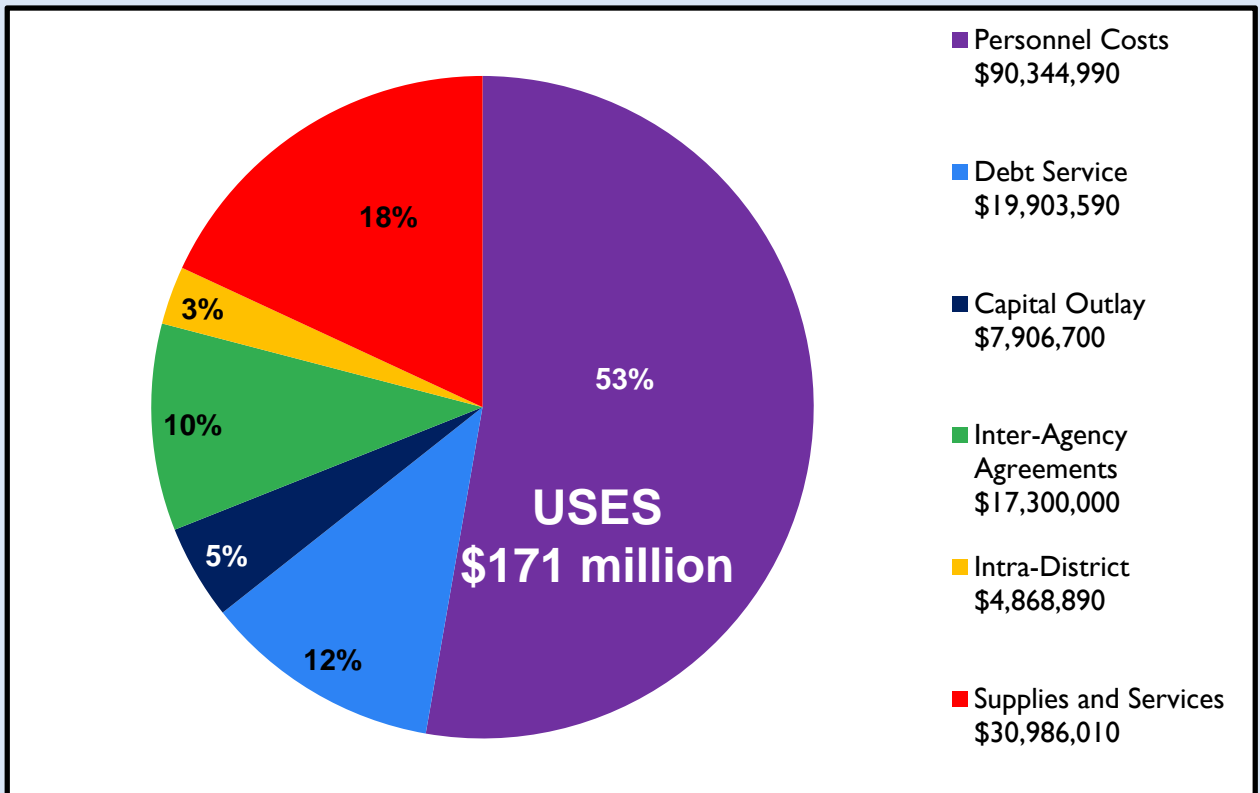
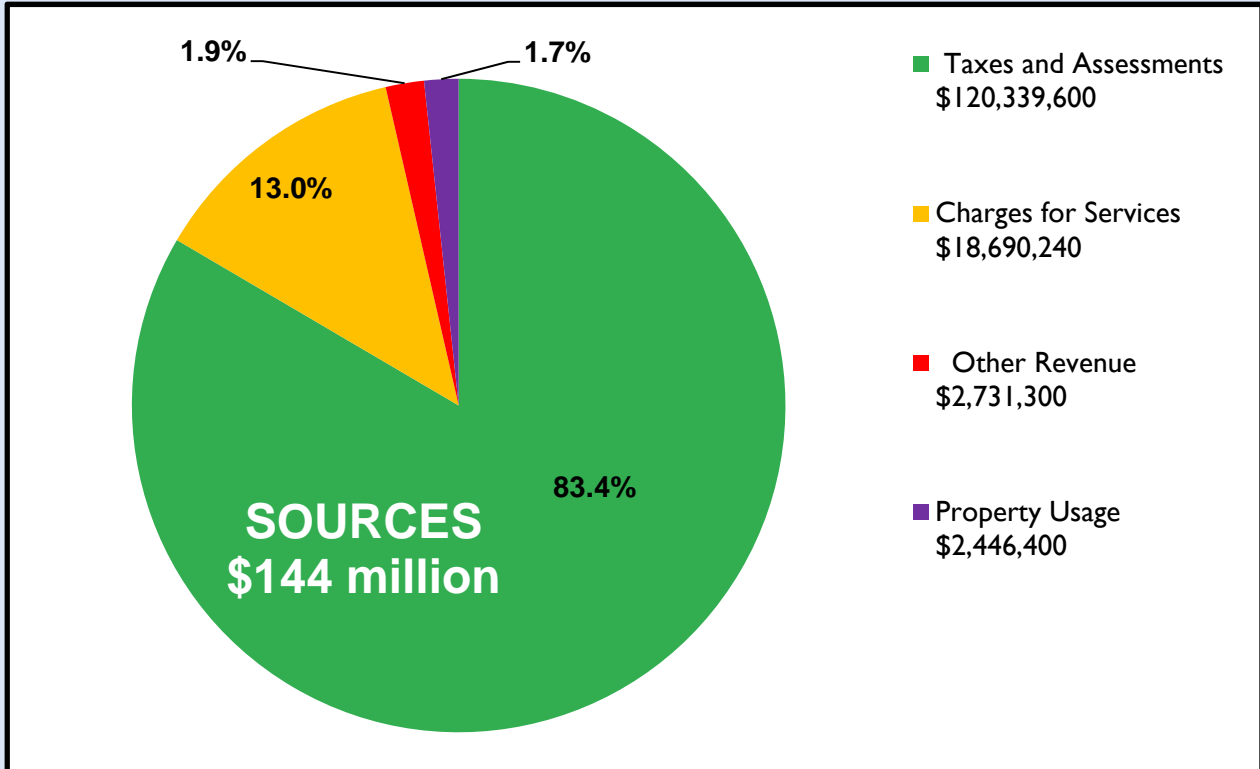


Charges for services is the second largest revenue source for the General Fund, representing 6% of total revenues. This 2013 revenue category is \$8,237,900 which includes these major revenue sources:

- parking fees (\$1.9 million),
- facility rentals (\$1.2 million),
- fishing, camping, boating fees (\$1.1 million)
- concession fees (\$1.0 million),
- public safety fees (\$1.0 million),
- other minor revenue sources (\$2.0 million).

2013 Fund Sources and Uses

The District's 2013 operating and project budgets are balanced and total \$171.3 million for all funds, including \$27.1 million use of project and debt service fund balance.



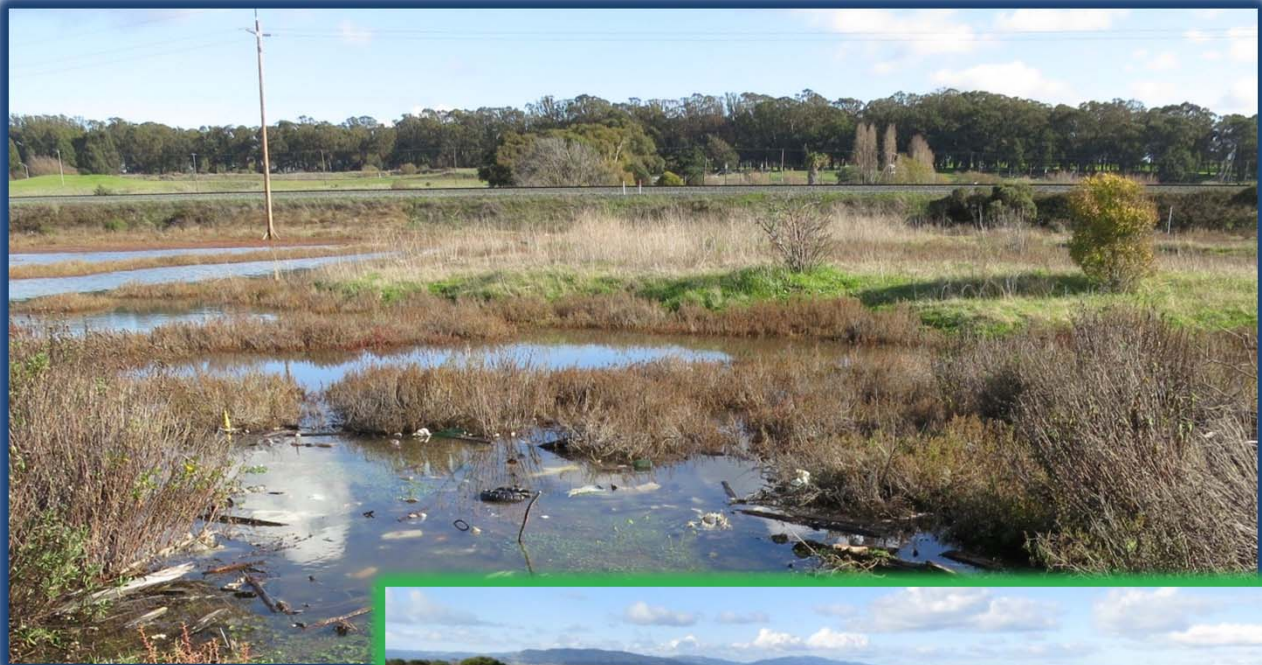
2013 FTEs/Budgets by Division

Divisions and Departments	2013 FTEs	2013 Adopted Budget
Executive & Legislative Division		
Board of Directors (elected)	0.00	\$ 370,060
General Manager	7.00	1,975,580
Subtotal	7.00	2,345,640
Finance & Management Services Division		
Administration	2.00	1,211,460
Clerk of Board	2.00	305,480
Finance Department	19.28	2,966,420
Grants Department	3.00	17,453,500
Information Services Department	7.00	2,058,390
Office Services Department	9.72	2,511,080
Subtotal	43.00	26,506,330
Human Resources Division	13.80	6,790,020
Land Division		
Administration	3.50	775,610
Environmental Review Department	4.00	1,297,950
Interagency Planning Department	3.00	525,860
Land Acquisition Department	5.00	7,547,260
Trails Development Department	3.00	500,520
Subtotal	18.50	10,647,200
Legal Division	9.45	6,873,340
Operations Division		
Administration	7.00	3,112,460
Park Operations Department	254.82	32,451,810
Interpretive & Recreation Services Dept.	92.32	11,128,810
Maintenance & Skilled Trades Dept.	69.90	14,444,700
Subtotal	424.04	61,137,780
Planning/Stewardship & Development Division		
Administration	2.53	704,140
Design & Construction Department	26.83	3,972,540
Planning & Stewardship Department	24.12	4,948,440
Subtotal	53.48	9,625,120
Public Affairs Division	17.20	3,516,030
Public Safety Division		
Administration & Support Services	28.00	6,263,530
Fire Department	52.18	6,267,560
Police Department	61.01	11,319,040
Subtotal	141.19	23,850,130
Non-Departmental	0.00	20,018,590
Total	727.67	\$ 171,310,180

2013 Projects

Projects, that will take more than one year to complete are tracked in one of two project funds. The 2013 adopted budget includes \$14,500,950 in new or additional project funding. Sources include grants from outside entities, Measure WW bond, General Fund transfers and Measure CC tax proceeds. Annual appropriations, unspent at the end of a fiscal period remain available for use within the project budgets until the project is completed.

Here are three ongoing District projects that received additional funding in 2013:



The 218 acre project to Restore Breuner Marsh received an additional \$600,000 in Measure CC funding in 2013. The project will eventually provide ecological habitat and additional public access by completing a gap in the San Francisco Bay Trail.

2013 Projects



The District's 2013 budget includes an additional \$1,000,000 budget for paving maintenance as well as one permanent FTE to administer the program.



The District-wide project "Pave Roads and Trails", will begin the year with a total budget of \$4.5 million and plans to spend \$2.9 million in 2013. The District is committed to maintaining existing infrastructure even as we fund projects for new acquisitions and construction.

In Progress

Fire fuels management, to reduce the risks of wildland fires, continues to be a funding priority for the District in 2013. Vegetation and invasive plants are removed via goats, heavy equipment and prescribed burns.



Prescribed burning to reduce wildland fuels

Since 2005, the District has committed more than \$5 million to monitor, manage and reduce fire fuels District-wide. Over \$1.2 million has been budgeted for fuels management projects in 2013.



2013 Budget Brief